



## SELBORNE VILLAGE

The attractive village of Selborne and its beautiful countryside is famous for its association with the eighteenth century naturalist Gilbert White. The parish of Selborne also includes the neighbouring villages of Blackmoor and Oakhanger, each with their own unique history.

There are two very good pubs in the village and there are various walks from the village centre including the 'Lythes' and the 'Hanger' that overlooks the village with its zig zag path cut by Gilbert White and his brother. They are part of the 275 acres of National Trust meadow, woodland and common and are open all year.

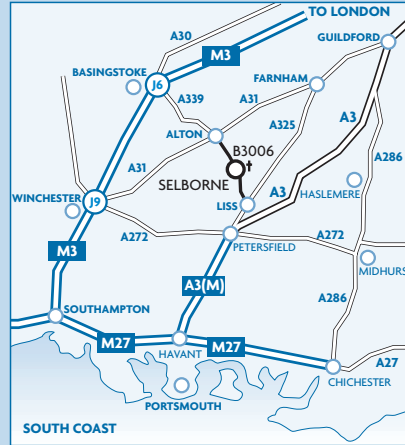
A leaflet describing the walks over the land is on sale at Selborne Post Office and in the shop at "The Wakes". There is also the Oates museum, which is devoted to the remarkable Oates family and in particular, Frank Oates, a Victorian explorer, and to Captain Lawrence Oates who accompanied Scott to the South Pole.



## HOW TO FIND US

The parish of Selborne is easily accessible from the A3, M3, A31 and A27. There is free parking in Selborne village car park which also accommodates coaches.

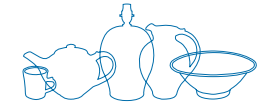
Visitors are welcome to make purchases from our showroom which is open 7 days a week and can be found adjacent to the studio. Weekend sales through the Selborne Gallery (next door).



The pottery is found opposite Gilbert White's House in a cobbled courtyard behind the Selborne Gallery which is near to the church.

## OPENING TIMES

10am - 6pm Mon-Fri & 12pm - 5pm at the weekends



# SELBORNE POTTERY

HAMPSHIRE

HAND THROWN & DECORATED STONEWARE



## SELBORNE POTTERY

HAND THROWN & DECORATED STONEWARE

**Robert Goldsmith**

Selborne Pottery . Selborne . Hampshire . GU34 3JQ . UK  
Telephone & Facsimile: 01420 511413  
sales@selbornepottery.co.uk [www.selbornepottery.co.uk](http://www.selbornepottery.co.uk)





# SELBORNE POTTERY

HAND THROWN & DECORATED STONEWARE



The Pottery is situated in the historic Hampshire village of Selborne, made famous by the naturalist Gilbert White in the eighteenth century by his book, 'The Natural History of Selborne'.

The pottery was established in 1985 by **Robert Goldsmith** after attaining a BA Hons in ceramics at West Surrey College of Art and Design in Farnham.

Each piece of pottery is hand thrown and turned on a wheel. No industrial techniques or moulds are used in the making process. The pottery does not try to mimic the past but does draw on skills rarely practised today. Combined with high temperature stoneware glazes, fine brushwork, wax resist and glaze trailing, the finished pots with rich copper red and cobalt blue glazes are both functional and decorative whilst still having a contemporary look.



The gold lustre range adds a luxurious opulence not normally found on studio pottery. The glazes and pigments are made up from raw materials in the pottery and are fired in a gas kiln to almost a white heat. This fuses both clay and glaze together in an impenetrable bond, giving the pottery both its brightness and its depth of colour.

Due to the nature of the firing process subtle colour changes occur in the glazes. This is especially true of the copper red glaze which can fire to a bright red, tomato red or pink giving pots in the same range the feeling of a family rather than of being cloned! Although decorative, the pots have been designed to be used and are oven and dishwasher safe. Pots with gold lustre should not be used in a microwave. There is no lead or cadmium in the glaze and all are safe for everyday use.



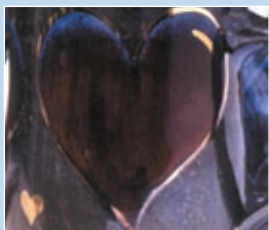
# PATTERN CARD



COBALT SEA



FLAME



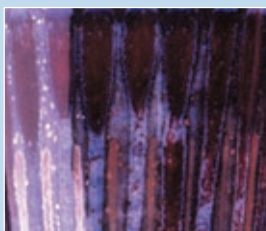
GOLD HEART



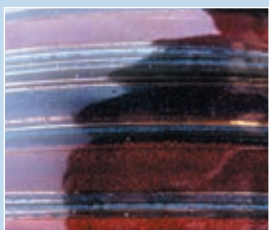
GOLD LUSTRE FISH



GOLD WAVE



HARLEQUIN



HUMBUG



RED STORM



DANCING LEAF



RED LUSTRE LEAF